

INTEGRATED LIFESTYLE HOUSING



Exterior Rendering

F A L L
'07

Harvard University Campus - Allston, MA

Architectural Design 2 Studio

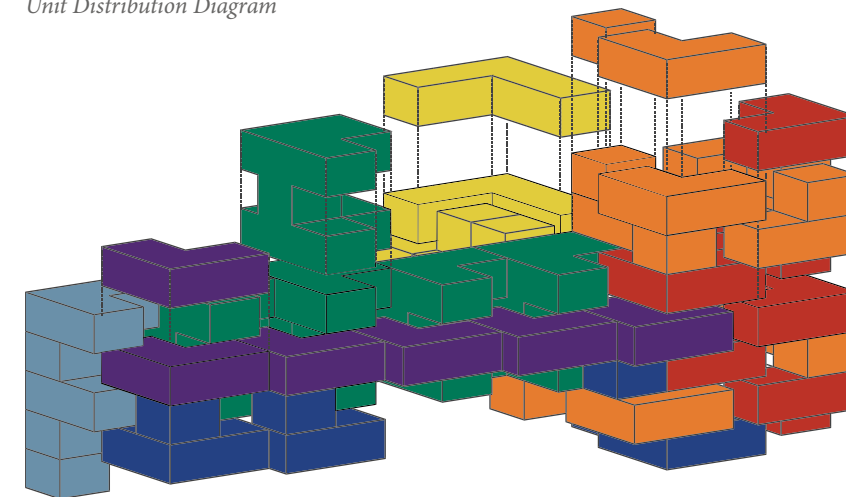
Professor Ali Soltani

Project with Kaitlyn Fitzgerald, Angelo Letizia, & Patrick Sullivan

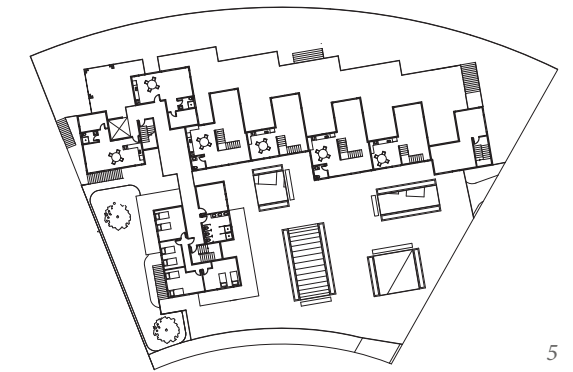


Physical Model

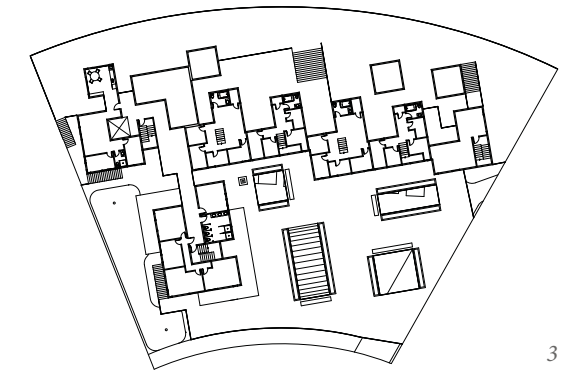
Unit Distribution Diagram



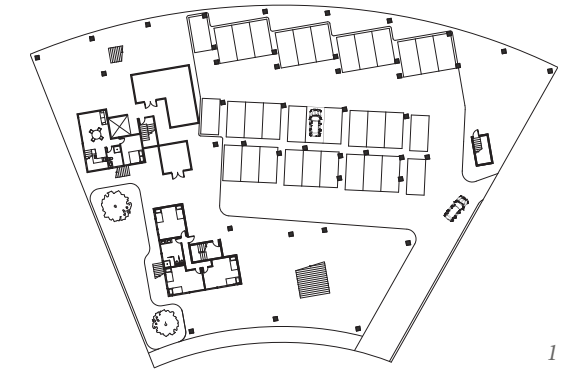
■ Single Apartment
 ■ Studio Apartment
 ■ Student Housing
 ■ Commercial Space
■ Double Apartment
 ■ Townhouse
 ■ Shared Space



5



3



1

Selected Plans

The culmination of a semester on residential building, Integrated Lifestyle Housing was a group project focused on breaking the mold of nuclear family housing. Located at the tip of Harvard University's campus, multiple unit types were combined with commercial areas and an exterior promenade to create spaces that blur the boundary between public and private spheres. Public spaces were raised above ground level to create this fusion.

P A G E
13