

**Lindsay Butler**  
portfolio : abbreviated

<b>4 WORKING</b> <sup>[1]</sup>	<b>3 MAKING</b> <sup>[2]</sup>	<b>2 TEACHING</b> <sup>[3]</sup>	<b>1 LEARNING</b> <sup>[4]</sup>
4.9 Joubel Apartments and Masterplan	3.8 Flash Flash Revolution	2.4 Final Watercolor Self-Portrait	1.15 Lions Park
4.8 Speculative Prototype	3.7 Fingerlings	2.3 First Watercolor Self-Portrait	1.14 Urban Natatorium
4.7 Sequoia Cafe	3.6 Shadowbox.er	2.2 Rendered Self-Portrait	1.13 Tension Box
4.6 CMS Offices	3.5 Salon des Refusés Poster	2.1 Contour Self-Portrait	1.12 Columbus Museum of Art
4.5 Obar Lounge and Restaurant	3.4 DuckBoat		1.11 SitUpon
4.4 Alexander Residence	3.3 Book of Steps		1.10 Folk Museum
4.3 Allegria Residence	3.2 Double Strain		1.9 Fashionable Book
4.2 Pig Roast Paraphernalia	3.1 Jump Down Turn Around		1.8 Cocktail Dress
4.1 Rural Studio Website			1.7 Machine for Weaving
			1.6 Residence for an Inventor
			1.5 RoboChapel
			1.4 Patrick House
			1.3 Bubblehouse
			1.2 Submersible Excavating Apparatus
			1.1 Needle-Nose Pliers

## reverse chronological index

<sup>[1]</sup> For the money.

<sup>[2]</sup> For the act or the object.

<sup>[3]</sup> Codified in an academic environment.

<sup>[4]</sup> Also codified in an academic environment.

THE FAIRMONT HOTEL in Cairo wished to transform an existing cigar lounge into a high-end venue serving sushi and cocktails.

Existing conditions of the space were challenging; the ceiling was exceptionally low, there were no external windows, and the spaces allotted for the project were disjunctive.

We set out to create illusions of lightness and fluidity while playing on a theme of voyeurism which resulted in an open restaurant and bar ringed by lounge areas. Projected on the terminal wall in each lounge area is a live image from elsewhere in the space. A draped industrial chain ceiling screens mechanical systems and provides a dynamic design feature while mother of pearl and oak wall claddings provide a softer contrast.

I was responsible for leading the project from concept design through construction documents for the architectural modification and interior design of the space. My responsibilities extended to external coordination and client presentations as well.

**interior section/  
elevation A : entry**

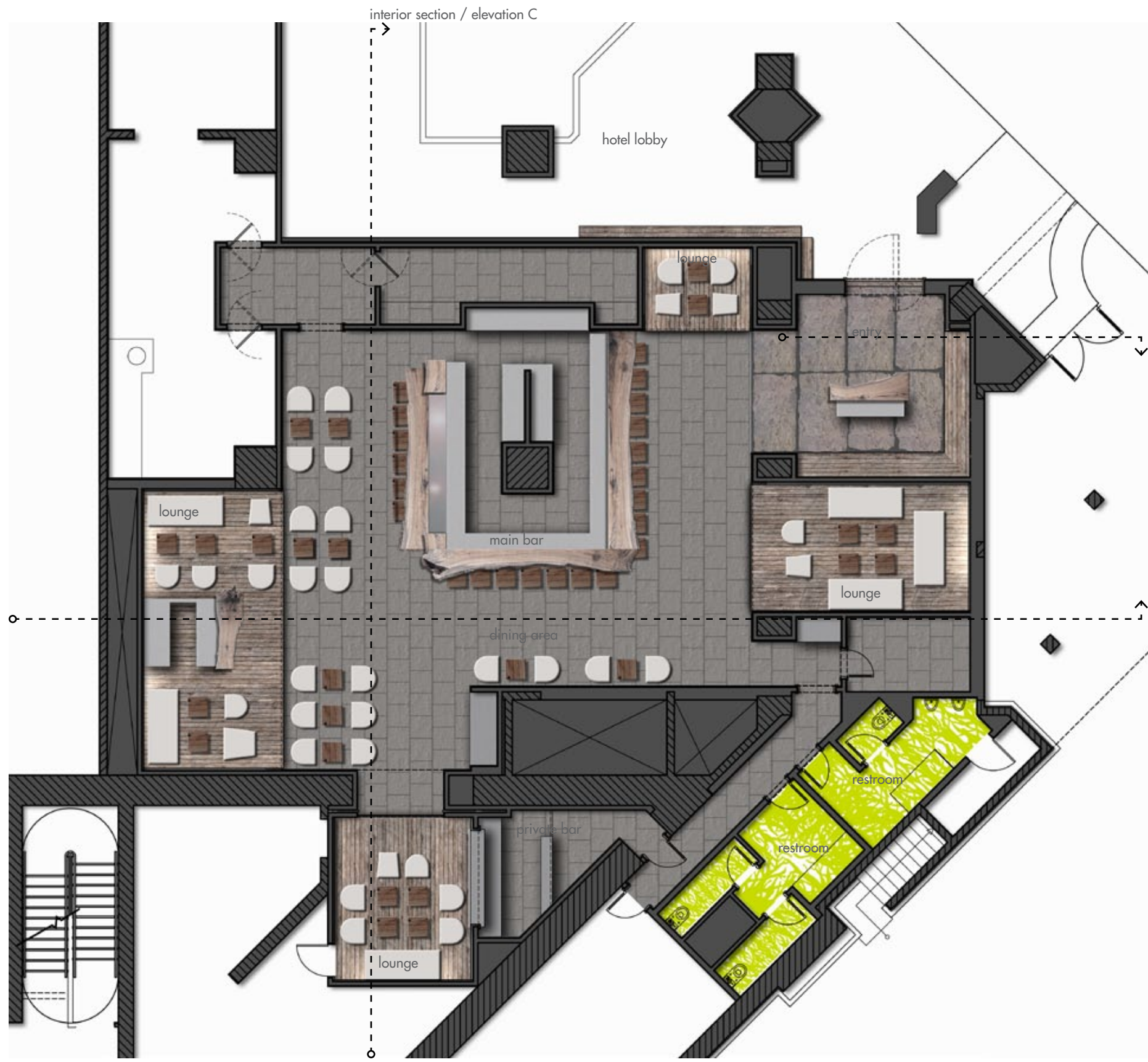
## **obar lounge and restaurant**

Size: 3750 sq ft /  
350 sq m

Materials: industrial  
chain, red oak,  
mother of pearl tiles,  
litracon™, granite,  
stoneware tiles

4.5





plan

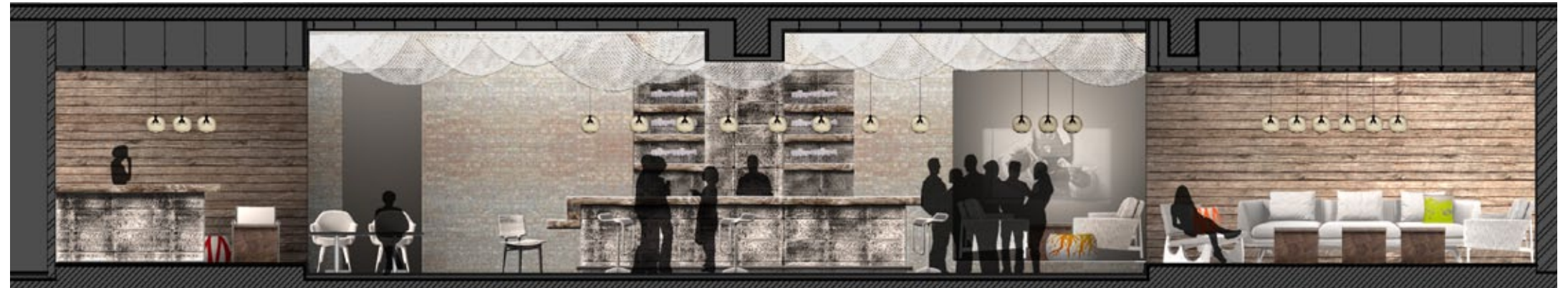
interior section / elevation A

interior section / elevation B

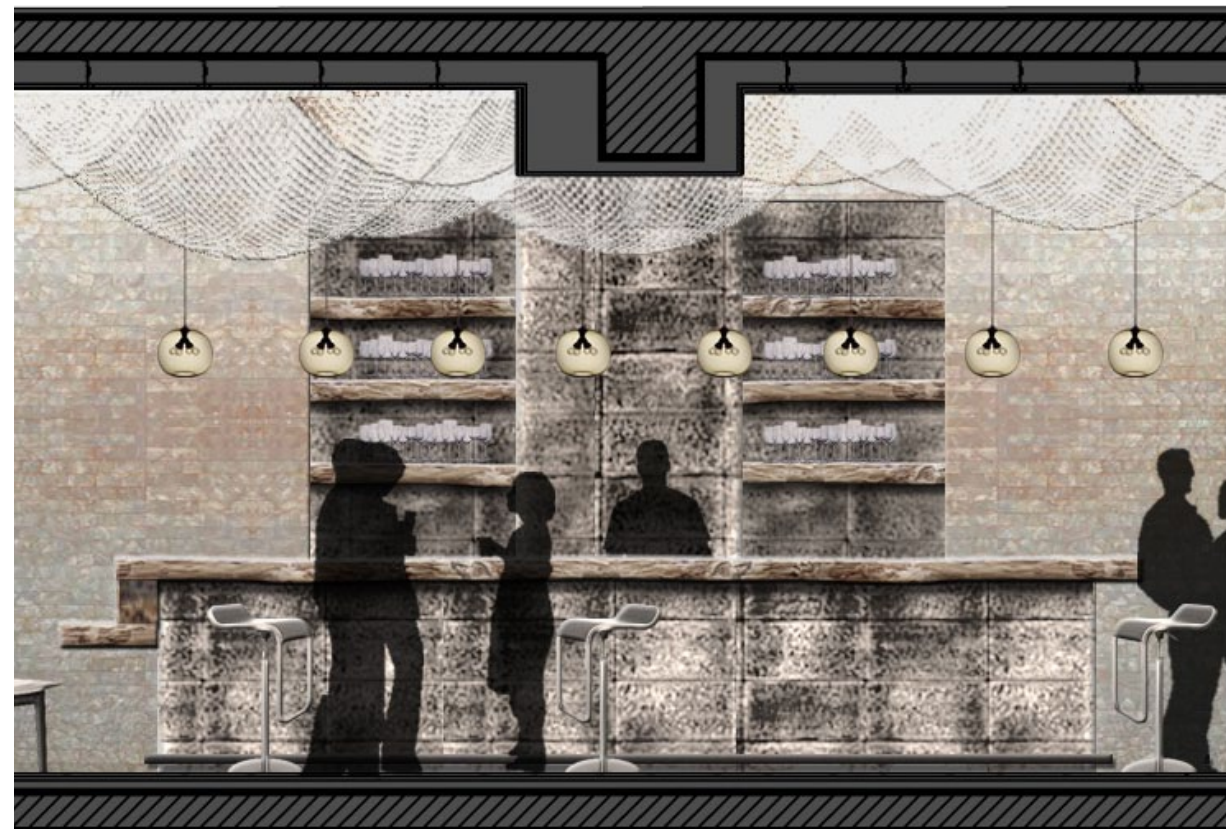
**obar  
lounge and  
restaurant**

Size: 3750 sq ft /  
350 sq m  
Materials: industrial  
chain, red oak,  
mother of pearl tiles,  
litracon™, granite,  
stoneware tiles

4.5



interior section/  
elevation B : main  
bar



magnify x2

## obar lounge and restaurant

Size: 3750 sq ft /  
350 sq m  
Materials: industrial  
chain, red oak,  
mother of pearl tiles,  
litracon™, granite,  
stoneware tiles

4.5

THE SUBURBAN SITE located in Cairo, Egypt presented a challenge with a five meter level change across its length.

With a desire to capitalize on the land levels, the design approach deliberately aims to incorporate the residence within the surrounding site and garden. This idea translates into an architecture that both vertically and horizontally integrates the program and the garden; where the land envelopes or pushes into the residence.

A double height space with floor to ceiling views of the garden vertically links the formal reception and the family living room. The upper garden houses the formal dining room which sits apart surrounded by a delicate copper screen, serving as a lantern in the landscape.

I began working on the project while it was in the early concept design stage and was responsible for elaborating the concept and developing the design. I oversaw engineering coordination and completion of construction documents.

**3D image : courtesy of direction studio**



### **allegria residence**

Size: 16000 sq ft / 1500 sq m

Materials: concrete, masonry block, steel, bronze, glazing, white oak, teak

4.3

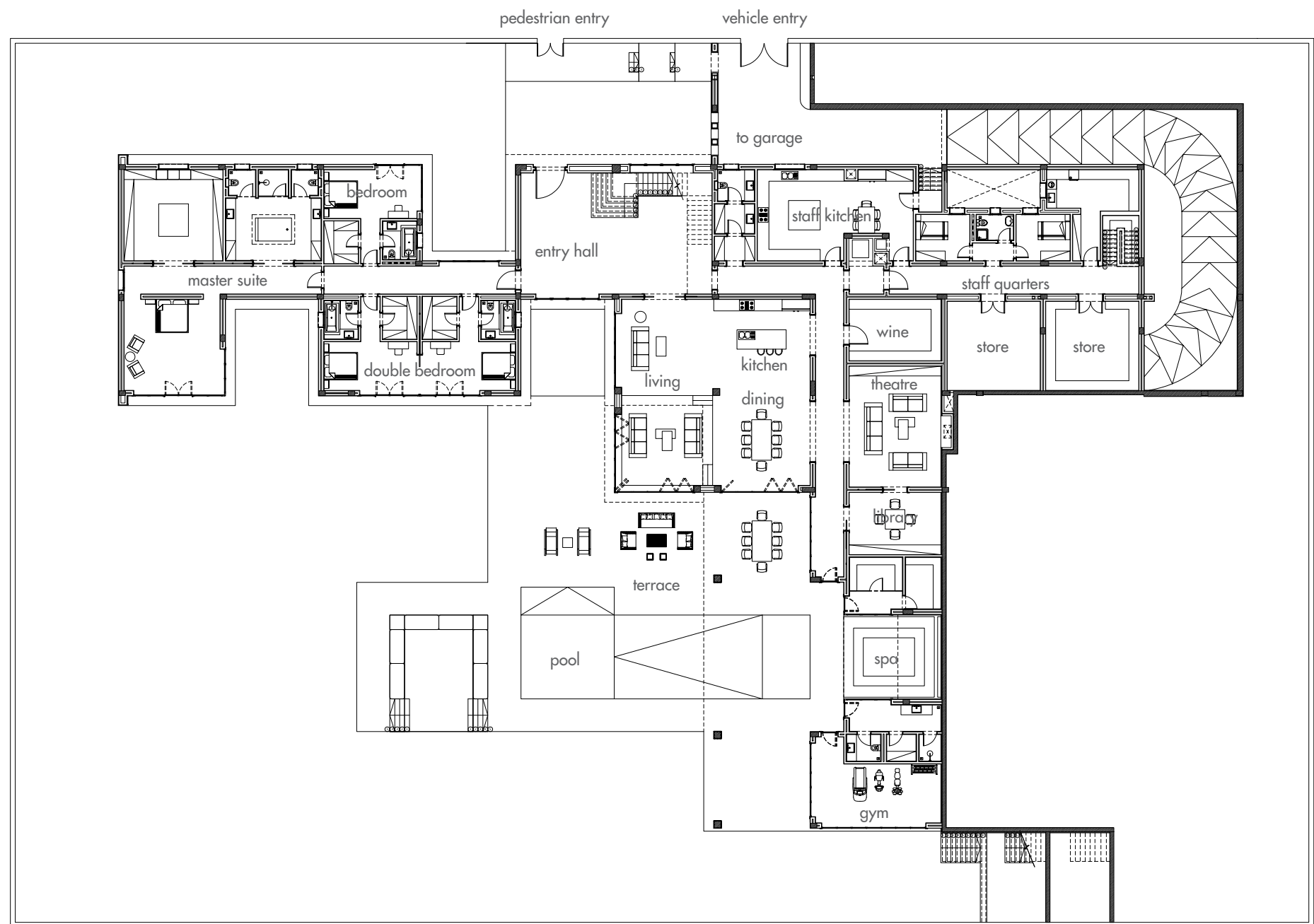


3D image : courtesy  
of direction studio

### **allegria residence**

Size: 16000 sq ft /  
1500 sq m  
Materials: concrete,  
masonry block, steel,  
bronze, glazing, white  
oak, teak

4.3



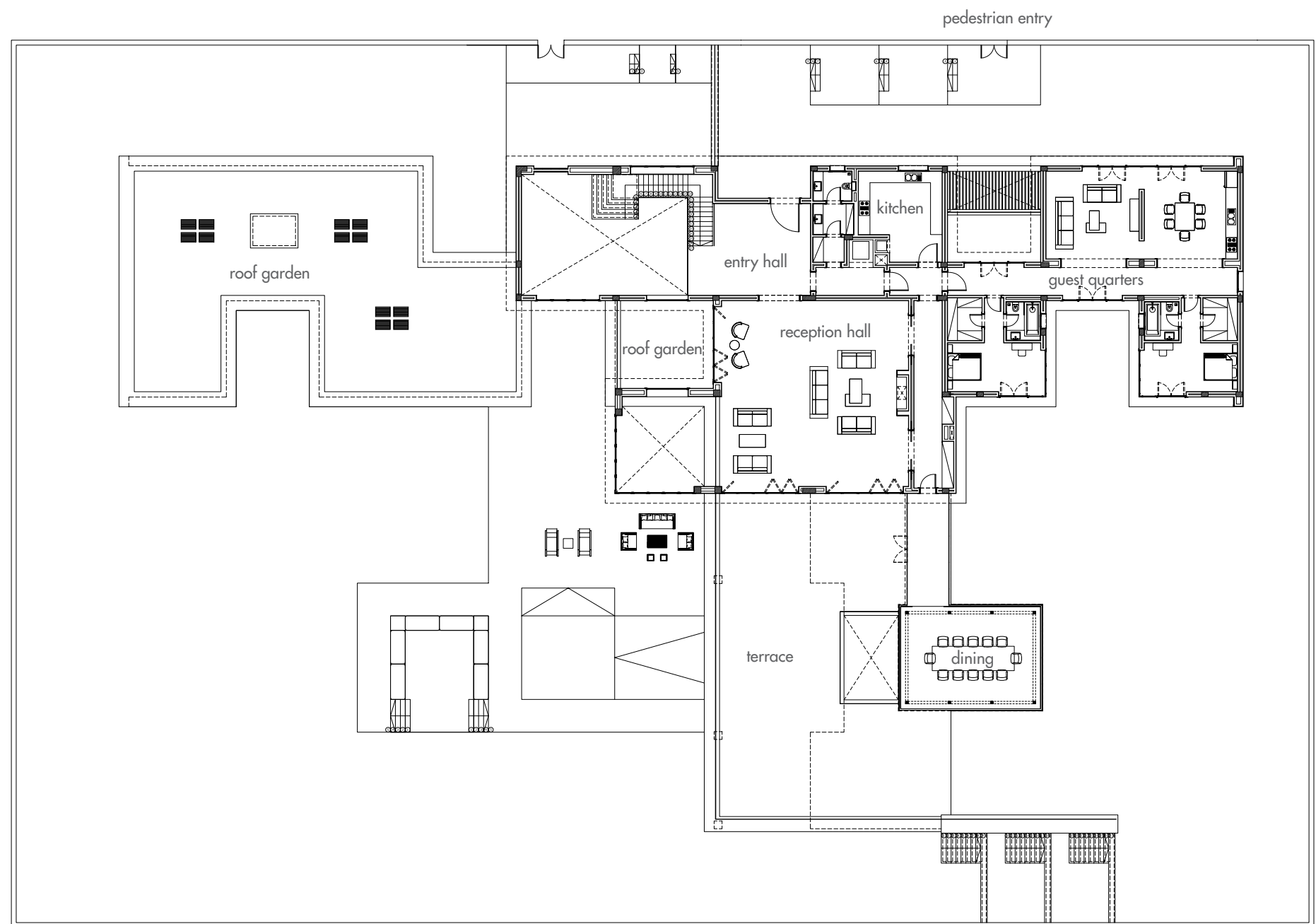
ground floor plan

**allegria residence**

Size: 16000 sq ft / 1500 sq m

Materials: concrete, masonry block, steel, bronze, glazing, white oak, teak





first floor plan

**allegria residence**

Size: 16000 sq ft / 1500 sq m  
 Materials: concrete, masonry block, steel, bronze, glazing, white oak, teak



DUCKBOAT REFLECTS a technical exploration of wood, and a formal exploration of the vessel.

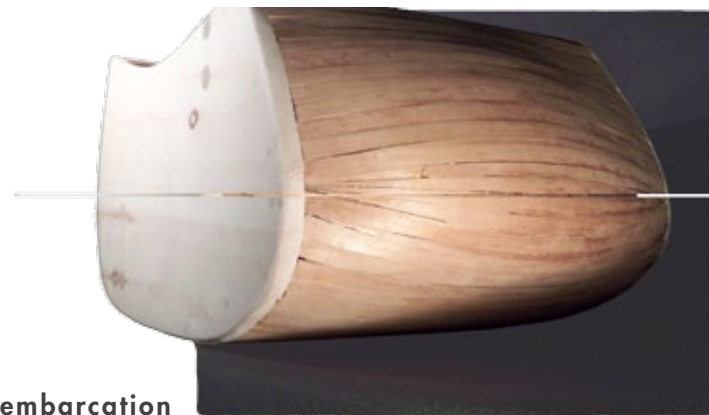
The skeleton of the duckboat was constructed from two flanks of soft yellow pine connected by a series of ribs. Honed by hand, the ribs curve through one axis and their faces are beveled to follow the curve of the flank. Thin strips of cedar were steamed with an iron and glued and stapled to the ribs.

The duckboat's scale is comfortably human. A single occupant kneeling inside is hugged by the vessel. The form is a subtly evocative organic volume that invites exploration.

**capseizure**

## duckboat

Size: 36" x 19" x 16" /  
91cm x 48cm x 41cm  
Materials: Spanish  
cedar, yellow pine,  
glue



embarcation



THIS EXAMPLE of second-year student work is from a three credit hour class I taught at Auburn University's Rural Studio.

Watercolor class is a tradition at the Rural Studio. Typically, students elect an Antebellum house or building to study, draw, and render in watercolor. I felt that students could gain more valuable skills using the fluid medium to render non-orthographic form and light, and overcome pre-conceived ideas about what is seen to be able to graphically reproduce what is seen objectively.

The self-portrait was a theme throughout the semester. The prior 4 assignments were self-portraits as well, in varied mediums and reproduced from mirror or photo.

All of the previous assignments were done in preparation for this final self-portrait. The exacting repetition ensured that students gained technical skill as well as overcoming their own preconceptions of their image.

**student work :**  
**alex henderson**

## **final watercolor self-portrait**

Size: 30" x 22" /  
76cm x 56cm

Materials: graphite,  
watercolor pigment,  
cotton paper



THE RURAL STUDIO allows students to design and build real projects in an underserved community. Students design, detail, and build their projects on a limited budget.

Joey Aplin, Adam Woodward, Anthony Vu and I completed the design and renovation of Lions Park in Greensboro, Alabama for our joint thesis project. We were charged with envisioning a multi-phase master plan and designing the landscape in the ailing community park.

Big gestures include spaces defined by vegetation, a large bioswale to demarcate edge, defined entry, main axis, congregating spaces, and connecting walking path.

A motif of concrete strips inlaid in the surface guides movement through the park, mimicking logs floating down a river. These linear strips also serve as typical public furniture, departing the surface vertically to become entry gates, trash receptacles, benches, tables, and light fixtures.

Additionally, we secured funding for a skatepark to be implemented in the following phase of construction.

**mechanical gates at entry : image courtesy of timothy hursley**

## **lions park**

Size: 40 acres /  
162000 sq m  
Materials: concrete,  
stone, steel, aluminum,  
dirt, trees, shrubs,  
grass

**1.15**



long path of the western tributary

## lions park

Size: 40 acres /  
162000 sq m  
Materials: concrete,  
stone, steel, aluminum,  
dirt, trees, shrubs,  
grass

1.15



site map

## lions park

Size: 40 acres /  
162000 sq m  
Materials: concrete,  
stone, steel, aluminum,  
dirt, trees, shrubs,  
grass



1.15

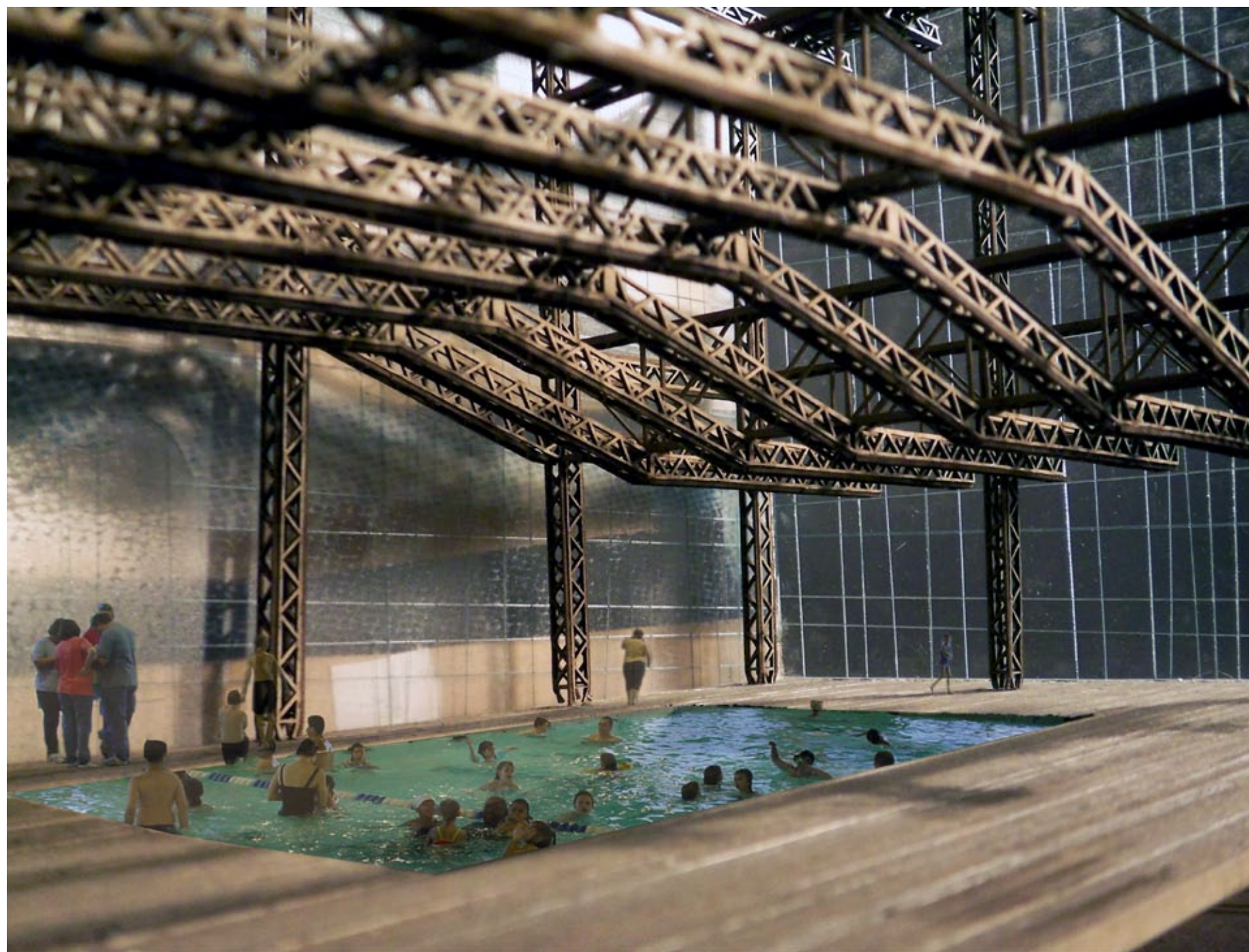


design drawing  
with fully grown  
foliage

## lions park

Size: 40 acres  
Materials: concrete,  
stone, steel, aluminum,  
dirt, trees, shrubs,  
grass

1.15



THE URBAN NATATORIUM investigates a large-span steel structure in the urban context of Birmingham, Alabama. The natatorium primarily serves as a recreational facility with a large lap pool and fitness center. While three quarters of the corner building's facades are dedicated to the fitness center / natatorium, the rest of the facade houses retail space and a restaurant.

Because the pool is on the second level of the building, the entry level ceiling plane is defined by the pool well, and supported by a forest of small steel columns.

Steel trusses of significant depth are used to achieve the clear span over the pool on the second level. These trusses become walls on the third level, and building occupants move through the trusses as they traverse the fitness center. A curtain wall of glass ensures ample light throughout the day and sun exposure at an indoor pool.

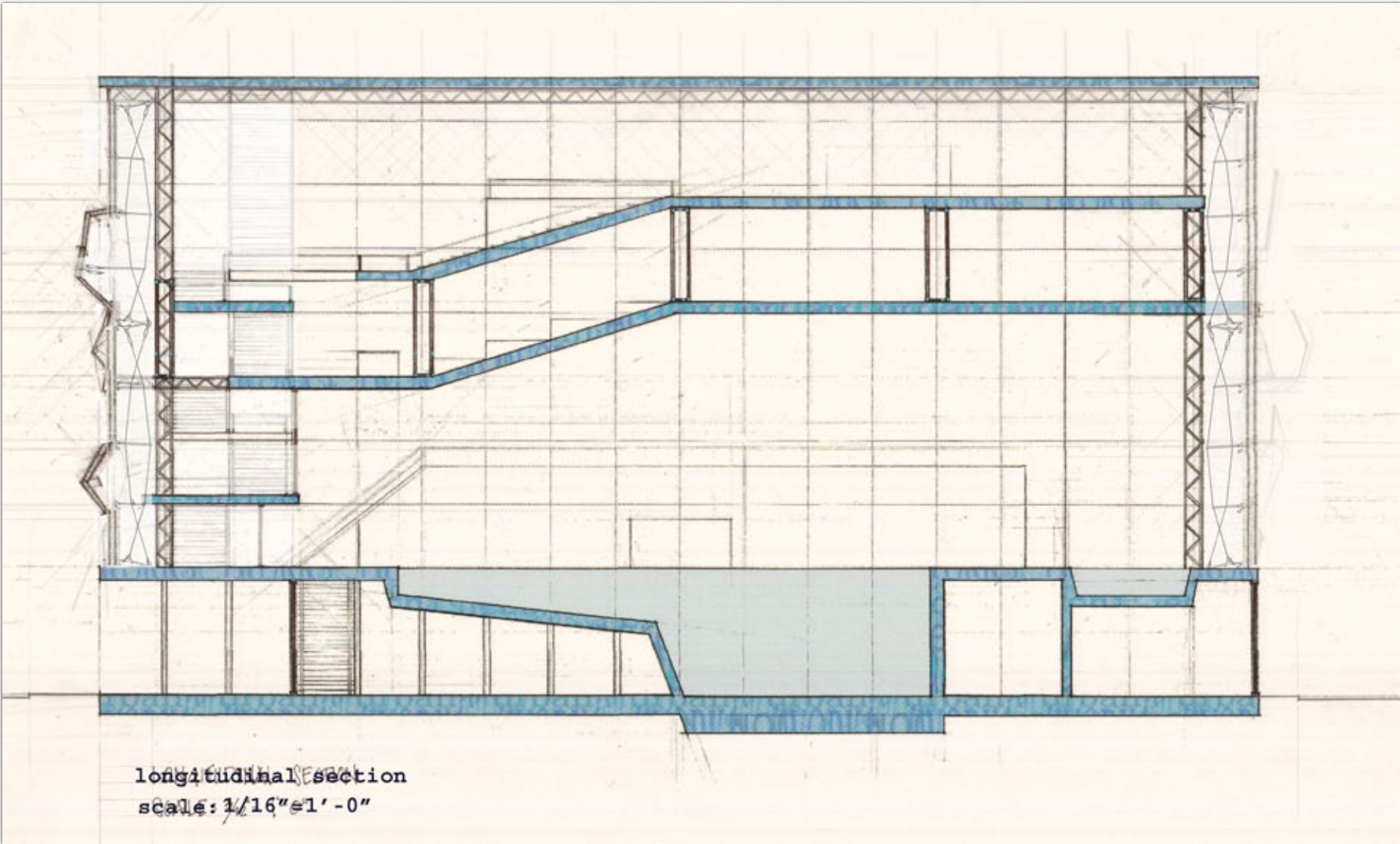
**inhabited  
model**

## **urban natatorium**

Size: 12" x 12" x 18" /  
30cm x 30cm x 46cm  
Materials: chipboard,  
glue, acrylic, dye,  
acetoned ink, vinyl,  
photoshop

1.14

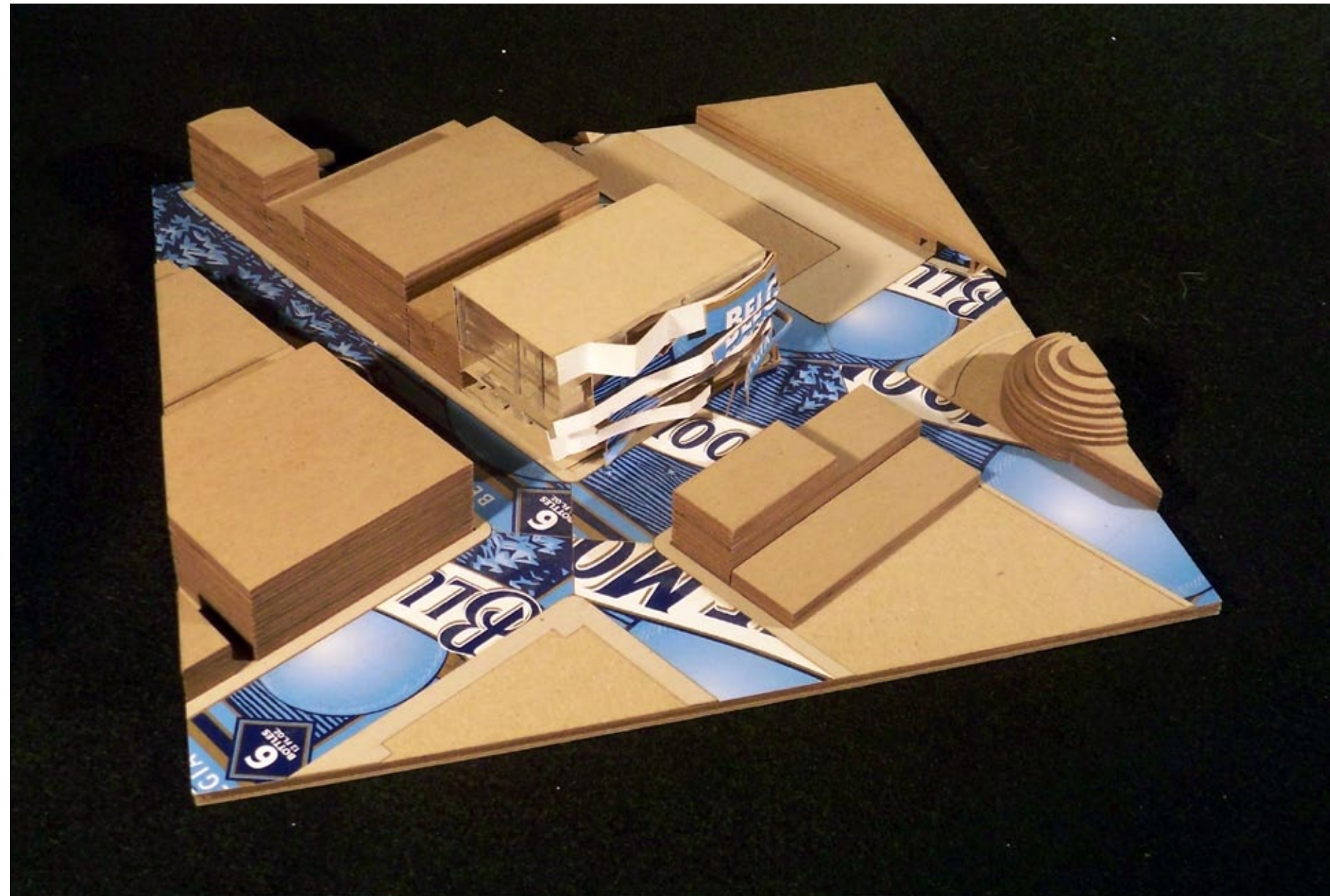




longitudinal section

**urban natatorium**

Size: 12" x 18" / 30cm x 46cm  
Materials: cotton paper, dye, acetoned ink, photoshop



site model

**urban  
natatorium**

Size: 12" x 12" x 3" /  
30cm x 30cm x 8cm  
Materials: chipboard,  
glue, acrylic, dye