

VOLUME VERSUS MASS

GIVEN A 25 FOOT BY 100 FOOT SITE TO DEVELOP A NEW TYPOLOGY FOR A SINGLE FAMILY RESIDENCE FOR PORTLAND, OREGON.

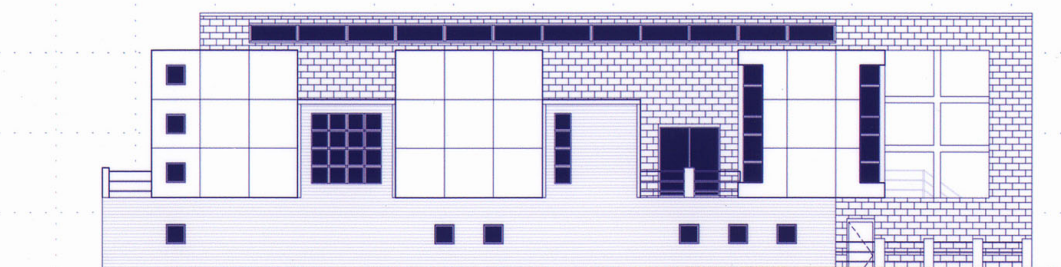
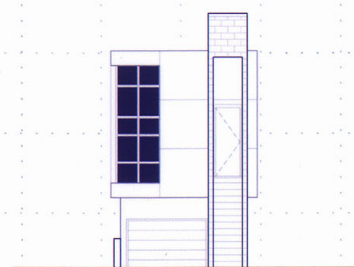
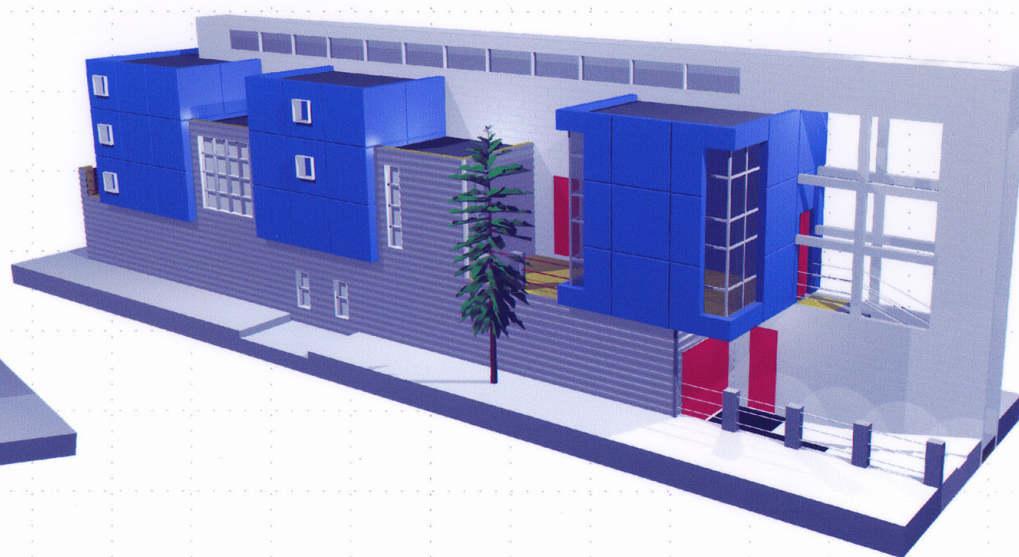
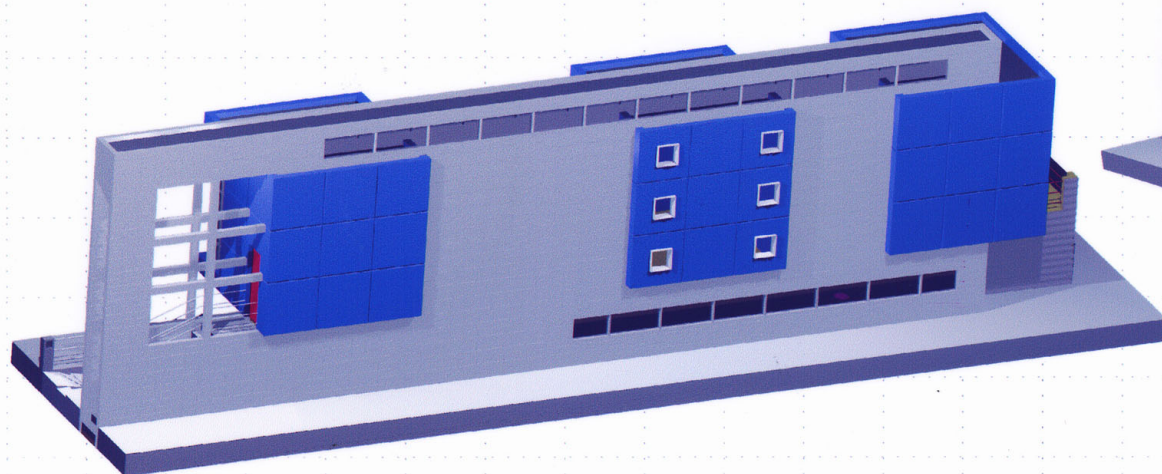
FIVE FOOT GRID ALLOWED FOR AND CREATED VOLUMES, EACH WITH A DESIGNATED PURPOSE.

FIFTEEN FOOT CUBES PROVIDE HOME WITH ALL LEVELS OF OCCUPANCY, FROM PUBLIC TO PRIVATE. EXTERIOR FINISH IS ALUMINUM PANELS, EMPHASIZING FIVE FOOT GRID.

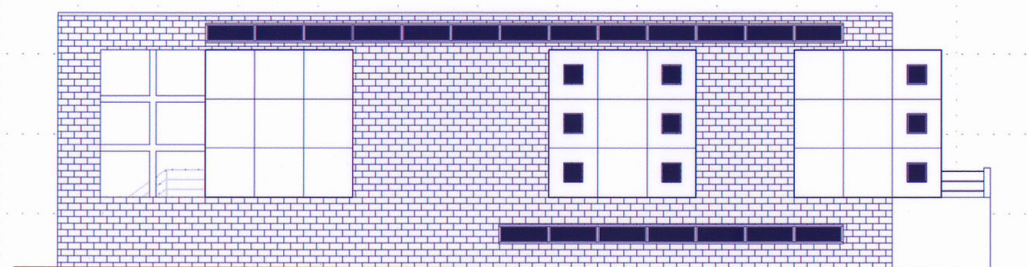
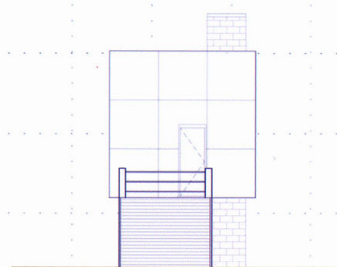
ELONGATED, NARROW MASS ACKNOWLEDGES THE SITE. IT IS THE SPINE OF THE HOME AS IT PROVIDES FOR THE CORE OF CIRCULATION THROUGHOUT THE RESIDENCE. THIS LONG, NARROW VOLUME PROVIDES A CORRIDOR WHICH LEADS OCCUPANTS TO ACCESS ANY PORTION OF THE HOME, BEGINNING WITH MOST PUBLIC (LIVING SPACE) TO MOST PRIVATE (MASTER BEDROOM). AS A TALL AND NARROW VOLUME, IT ALSO SERVES AS AN EFFICIENT TOOL TO ALLOW STAGNANT AIR TO EXIT THE INTERIOR SPACE. AS THE TALLEST MASS OF THE HOME, IT SHARES THE DOMINANCE OF THE SITE WITH THE THREE FIFTEEN FOOT CUBES. EXTERIOR FINISH IS SEALED MASONRY BLOCK.

PEDESTAL FOR THE CUBES IS THE GROUND FLOOR, WHICH ALLOWS FOR THE REMAINDER OF PROGRAMMATIC REQUIREMENTS. THIS MASS PROTRUDES AT CERTAIN LOCATIONS, AT VOIDS BETWEEN CUBES, TO CREATE A MORE SMOOTH TRANSITION, PROGRAMMATICALLY AND VOLUMETRICALLY. EXTERIOR FINISH IS CORRUGATED METAL PANELS. A SMALL TERRACE IS CREATED WHEN THESE MASSES MEET TO ALLOW FOR AN OPPORTUNITY FOR OUTDOOR SPACE IN A DWELLING LOCATED DEEP WITHIN AN URBAN ENVIRONMENT.

THE COMBINATION OF THESE SERIES OF ACTIONS WERE ALL DRIVEN BY THE GOAL OF ACHIEVING COMFORT IN A SITE WITH LIMITED SPACE.



ELEVATION A



ELEVATION B