

ARCHITECT
 HOLMES HEPNER & ASSOCIATES ARCHITECTS
 109 NORTH BRUSH STREET, SUITE 100
 TAMPA, FLORIDA 33602
 813-229-0614
 REG. NO. AA 0002617

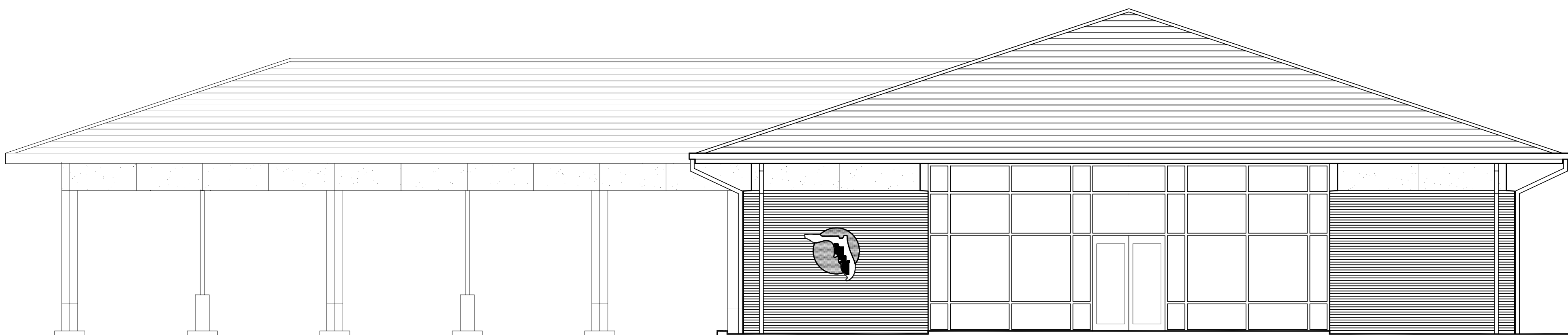
CIVIL ENGINEER AND LANDSCAPE
 TDM CONSULTING, INC.
 8695 COLLEGE PARKWAY, SUITE 106
 FORT MYERS, FLORIDA 33919
 239-433-4231
 REG. NO. P03000072719

STRUCTURAL ENGINEER
 CATALANO ENGINEERING, INC.
 120 SOUTH EDISON AVE.
 TAMPA, FLORIDA 33606
 813-254-1265
 REG. NO. 6826

MECHANICAL, ELECTRICAL, & PLUMBING ENGINEER
 ANSTON-GREENLEES, INC.
 1315 WEST FLETCHER AVE.
 TAMPA, FLORIDA 33612
 813-963-1919
 REG. NO. 6093

SUNCOAST SCHOOLS FEDERAL CREDIT UNION

CAPE CORAL MEMBER SERVICES FACILITY

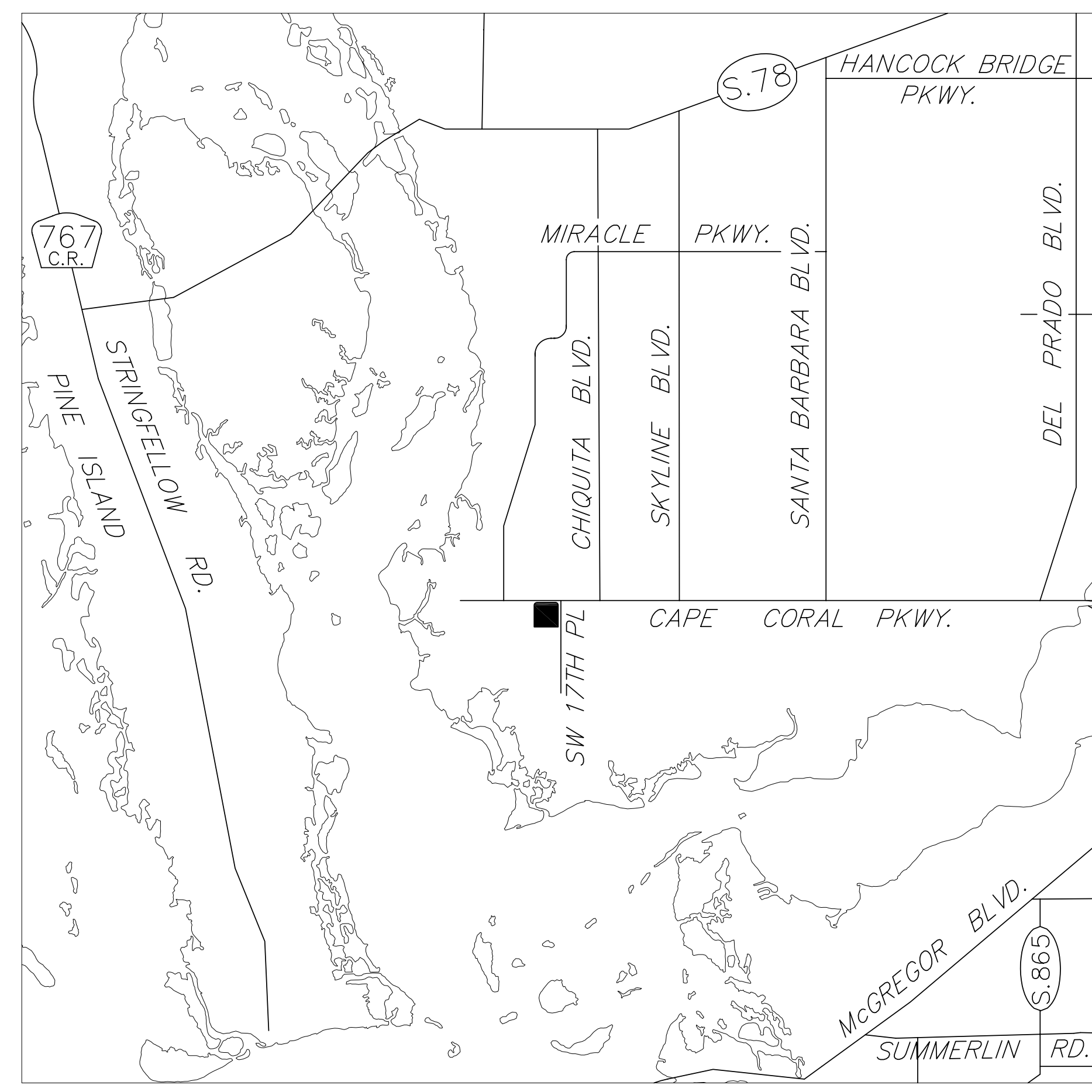


DRAWING SYMBOL LEGEND

- DETAIL SYMBOL
 1 DETAIL NUMBER
 A34 DRAWING NUMBER
- EXTERIOR ELEVATION SYMBOL
 1 ELEVATION NUMBER
 A34 DRAWING NUMBER
- COLUMN LINE SYMBOL
 1 CENTERLINE OF REFERENCE GRID
- SECTION SYMBOL
 1 SECTION NUMBER
 A34 DRAWING NUMBER
- INTERIOR ELEVATION SYMBOL
 1 ELEVATION NUMBER
 A11 DRAWING NUMBER
- DOOR SYMBOL
 1-102 DOOR NUMBER
 1 A DOOR TYPE / FRAME TYPE
 (SEE SHEET A13.1 FOR SCHEDULE)
- EQUIPMENT TYPE
- WINDOW, LOUVER, STOREFRONT AND CURTAIN WALL TYPE
 (SEE SHEET A13.1 AND A13.2 FOR SCHEDULE)
- TOILET ACCESSORY TYPE
 (SEE SHEET A12.2 FOR SCHEDULE)
- SIGNAGE TYPE
 (SEE SPECIFICATIONS SECTION 10425 FOR SCHEDULE)
- VERTICAL ELEVATION MARK
- NORTH ARROW

INDEX OF DRAWINGS

- I-1 INDEX AND COVER
- CIVIL**
 - C1.0 SITE DIMENSION PLAN
 - C2.0 PAVING, GRADING, AND DRAINAGE PLAN
 - C3.1 PAVING, GRADING, AND DRAINAGE DETAILS
 - C3.2 PAVING, GRADING, AND DRAINAGE DETAILS
 - C4.0 UTILITY PLAN
 - C5.1 UTILITY DETAILS
 - C5.2 UTILITY DETAILS
 - C6.0 STORMWATER POLLUTION PREVENTION PLAN
 - C7.0 STORMWATER POLLUTION PREVENTION DETAILS
- LANDSCAPE**
 - L1.0 LANDSCAPE PLAN
 - L2.0 IRRIGATION PLAN
- ARCHITECTURAL**
 - A1 SITE PLAN
 - A2.1 ROOF PLAN
 - A2.2 FLOOR PLAN
 - A2.3 DIMENSION PLAN
 - A2.4 REFLECTED CEILING PLAN
 - A3.1 BUILDING ELEVATIONS
 - A4.1 BUILDING SECTIONS
 - A4.2 WALL SECTIONS
 - A5.1 SITE DETAILS
 - A7.1 INTERIOR ELEVATIONS
 - A7.2 LARGE SCALE PLAN AND ELEVATIONS
 - A7.3 LARGE SCALE PLAN AND ELEVATIONS
 - A8.1 DETAILS
 - A8.2 CABINET SECTIONS AND DETAILS
 - A8.3 CABINET SECTIONS AND DETAILS
 - A8.4 CABINET SECTIONS AND DETAILS
 - A9.1 DETAILS
 - A9.2 DETAILS
 - A9.3 DETAILS
 - A9.4 DETAILS
 - A10.1 DOOR & FRAME SCHEDULES
- STRUCTURAL**
 - S1.0 STRUCTURAL NOTES AND SPECIFICATIONS
 - S2.0 FOUNDATION PLAN
 - S2.1 FOUNDATION DETAILS
 - S3.0 WALL PLAN
 - S4.0 ROOF FRAMING PLAN
 - S5.0 STRUCTURAL WALL SECTIONS
 - S5.1 STRUCTURAL WALL SECTIONS
 - S5.2 STRUCTURAL WALL SECTIONS
 - S6.0 DETAILS
 - S6.1 DETAILS
- MECHANICAL**
 - M1.1 HVAC FLOOR PLAN
 - M2.1 HVAC SCHEDULES & DETAILS
- PLUMBING**
 - P1.1 PLUMBING FLOOR PLAN
 - P3.1 PLUMBING SCHEDULES & DETAILS
 - P2.1 SANITARY RISER
 - P2.2 DOMESTIC WATER RISER
- ELECTRICAL**
 - E0.1 LEGEND, FIXTURE SCHEDULE, AND GENERAL NOTES
 - E1.0 ELECTRICAL SITE PLAN
 - E2.0 LIGHTING FLOOR PLAN
 - E3.0 POWER AND DATA FLOOR PLAN
 - E4.0 POWER AND SYSTEMS FLOOR PLAN
 - E5.0 ELECTRICAL RISER DIAGRAM & PANEL SCHEDULES



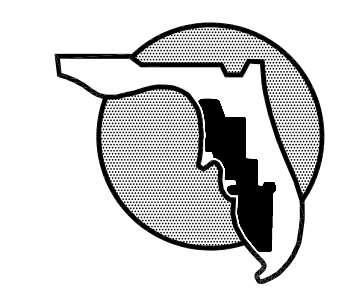
LOCATION MAP
 NOT TO SCALE

ARCHITECT
HOLMES HEPNER & ASSOCIATES ARCHITECTS
 109 NORTH BRUSH STREET, SUITE 100
 TAMPA, FLORIDA 33602 PH: 813-229-0614

CIVIL ENGINEER AND LANDSCAPE
TDM CONSULTING, INC.
 8695 COLLEGE PARKWAY, SUITE 106
 FORT MYERS, FLORIDA 33919 PH: 239-433-4231

STRUCTURAL ENGINEER
CATALANO ENGINEERING, INC.
 120 SOUTH EDISON AVE.
 TAMPA, FLORIDA 33606 PH: 813-254-1265

MECHANICAL, ELECTRICAL, & PLUMBING ENGINEER
ANSTON-GREENLEES, INC.
 1315 WEST FLETCHER AVE.
 TAMPA, FLORIDA 33612 PH: 813-963-1919



**SUNCOAST
 SCHOOLS
 FEDERAL
 CREDIT UNION**

CAPE CORAL
 MEMBER SERVICE CENTER

| | |
|------------------------|------------|
| PROJECT NO. | 2856 |
| DISTRIBUTION | DATE |
| CONSTRUCTION DOCUMENTS | 07/11/2007 |
| | |
| | |
| | |
| | |

INDEX