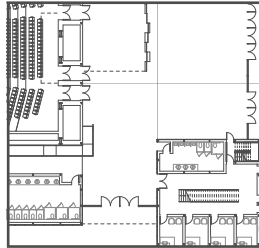
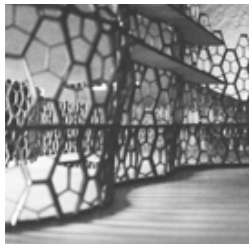
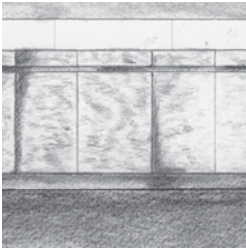


SARAH ELIZABETH GRIDER



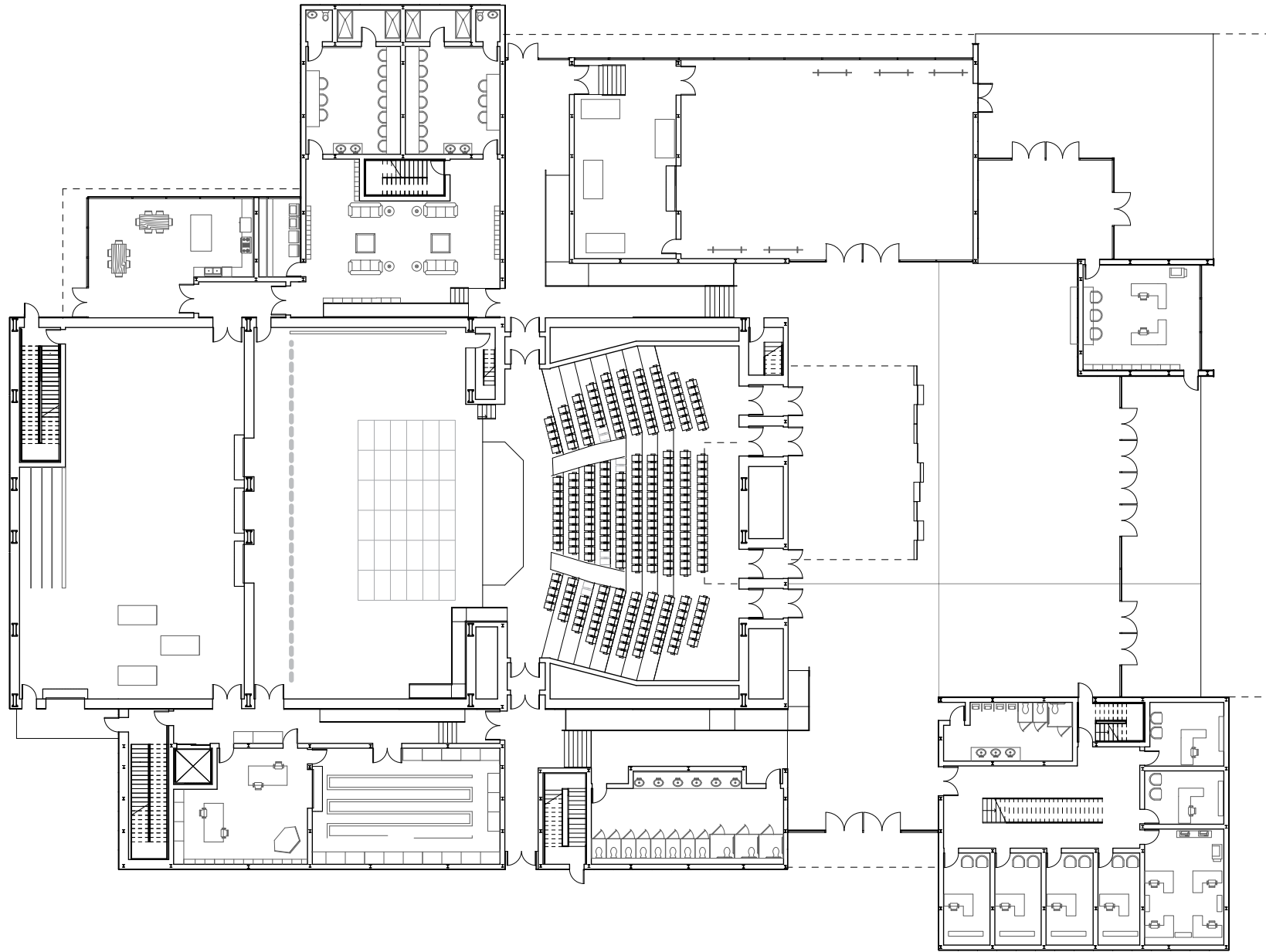


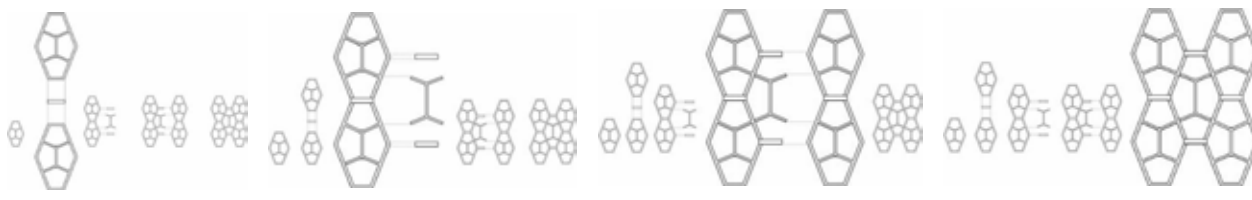
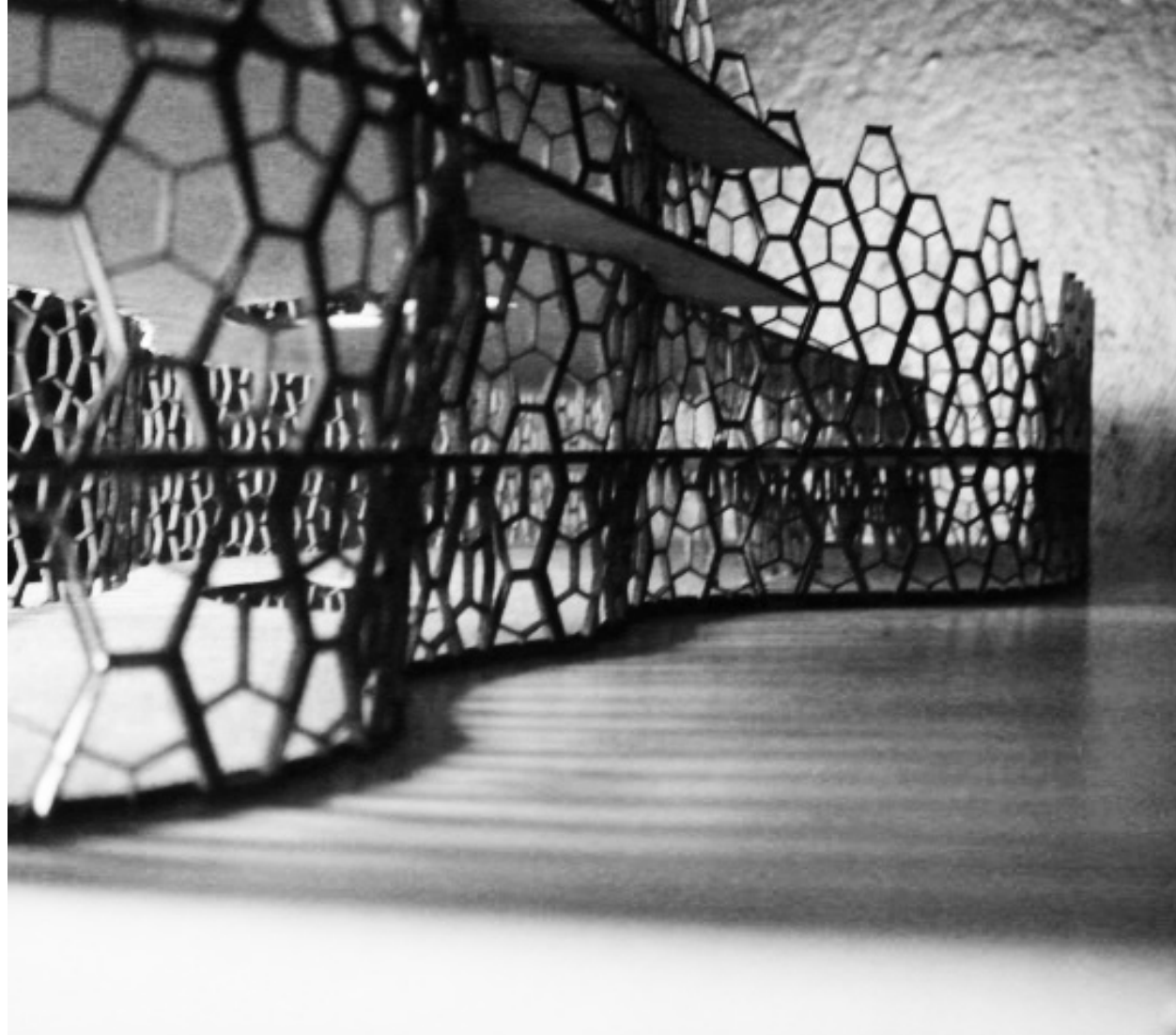
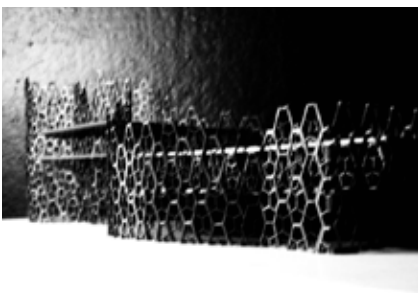
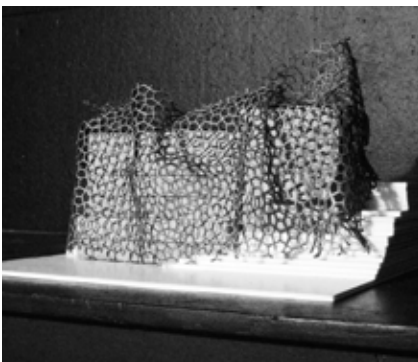
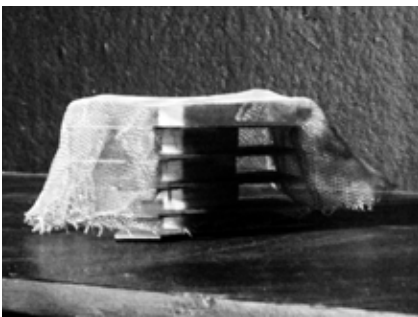
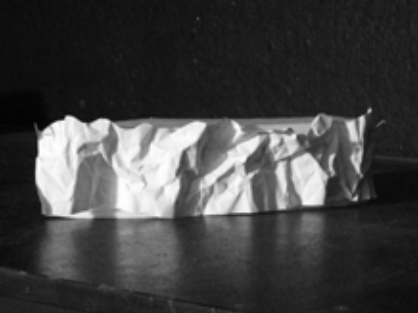
LIMELIGHT THEATER

A community theater has developed into a hub for multiple art forms. While the relationship between the house and the stage has been well studied, it is the relationship between all of the auxiliary spaces surrounding the house that truly allow the theater to become flexible and available to many diverse art forms.

This program requires an open and flexible relationship between the house and the auxiliary spaces. These spaces have to work individually as well as a whole unit to allow the actions on the stage to happen smoothly and professionally. While the traditional relationship between public and back of house spaces remain intact, the more flexible gathering spaces such as the lobby and rehearsal rooms have become a spine that connects the building together. These spaces take on a double life in the theater, while they are programmed to be a transition space between the exterior and the stage, particularly the lobby becomes a gathering space for guest to meet and mingle, a space to host fundraisers and events.

As a new performing arts complex, the theater has the opportunity to visually impact the surrounding environment through the introduction of modern architectural ideas and materials into a more traditional district. The site for the new community theater is on the edge of what is considered downtown Jackson. The view sheds for the site will allow the building to have a visible and prominent part of the Jackson sky line

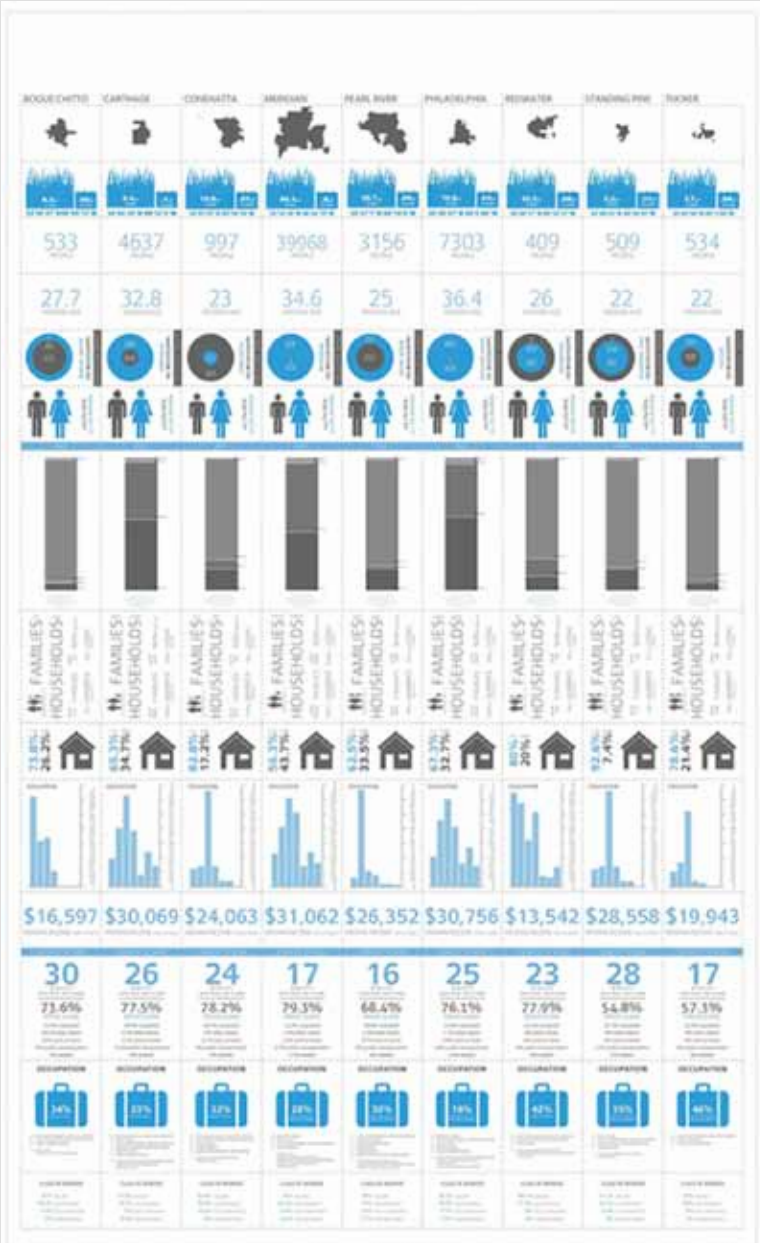




PUL INSITUTE

The PUL Institute was the product of a joint studio between the senior interior design class and the 4th year architecture studio. The project was run by the Educational Design Institute and the CREATE foundation of Tupelo, MS to prepare a proposal for a new Vo-Tech Magnet school for the tri-county Alliance of Pontotoc, Union and Lee.

The team composed of two architects and one interior design student collaborated together to create a master plan for the property design, a structure for the school that maximized steel construction, as well as develop a functional layout for the school program. The joint studio project was also the senior capstone project and was part of the Mississippi State Fourth Year Travel Fellowship Student Design Competition, in which the project received the Honorable Mention.



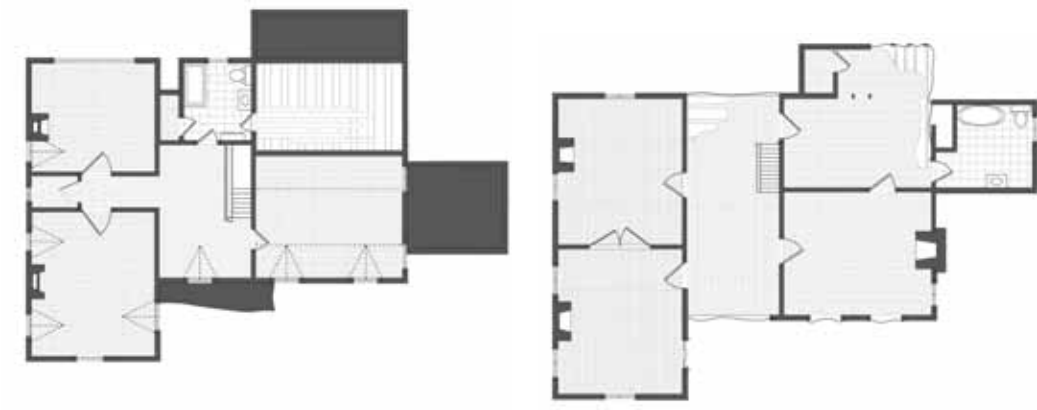
TRANSIT

A collaborative sponsorship between the Mississippi Band of Choctaw Indians (MBCI) and the Carl Small Town Center created the 'Transit' research and studio project. This project analyzed and evaluated the further development of the Choctaw Transit System that services tribal and non-tribal members, within a nine county region of Mississippi. The study was designed to outline a set of principles for strategic transit service expansion and improvement, primary focused on the design of publicly accessed/occupied Choctaw Transit infrastructure and its potential as a generative agent for civic development.

The findings of the study, outlined the goals and objectives of an accompanying design studio tasked with the design and construction of a "Production Ready" bus shelter prototype. The project was intended to suit both the transit system patrons and the immediate community and was erected by the studio participants.

- Awards:**
- 2010-2011 ACSA Collaborative Practice Honorable Mention for "Mississippi Band of Choctaw Indians Public Transit: A study of place, people and design thinking"
 - MSU Diversity Team Award for Transit in association Carl Small Town Center
 - 2nd Annual Transportation Workshop Student Poster Competition, Placed Second
 - Recipient of Student Undergraduate Research Award for CAAD

Project team includes: J.Poros, H. Herrmann, N. Hester, B. Hester and Fourth Year Studio



HOUSE AND HOME

The Carrollton House Installation was an exercise in representation. The historic home was photographically documented and measured so an accurate digital elevation could be created. A montage was also created to highlight the existing conditions of the house. A second requirement of the project was an intervention using a manipulated chair. The chair had to be integrated into the house as if it has always existed within the structure of the home. The chair was designed to challenge while at the same time blend in with the chosen space within the house and its surroundings.



MEDAL OF HONOR MEMORIAL

This project focused on designing an addition to the existing war memorial in the heart of downtown Jackson, specifically to honor the 17 Medal of Honor recipients from the state of Mississippi. Given the challenge of designing a respectful encasement for such strong figures, the project took on two lines of exploration. The first was the figure ground relationship of the memorial addition with-in the city fabric of Jackson and the old capitol green, where the site was located. This figure ground relationship drove the mass, organization and circulation path of the MOH addition.

The second line of exploration focused on the texture and surfaces of the exterior by looking how shadow lines and surface texture could help highlight or de-emphasize a design feature, as well as add subtle variations and depth to a rhythmic pattern. On the interior, surface and texture were used to de-emphasize the building and help highlight the MOH. Chosen to be displayed chronologically, the medals and the path through the building to create a physical time line that leads you to a blank wall on the other side of the gathering space where the future Medals of Honor will be displayed.

