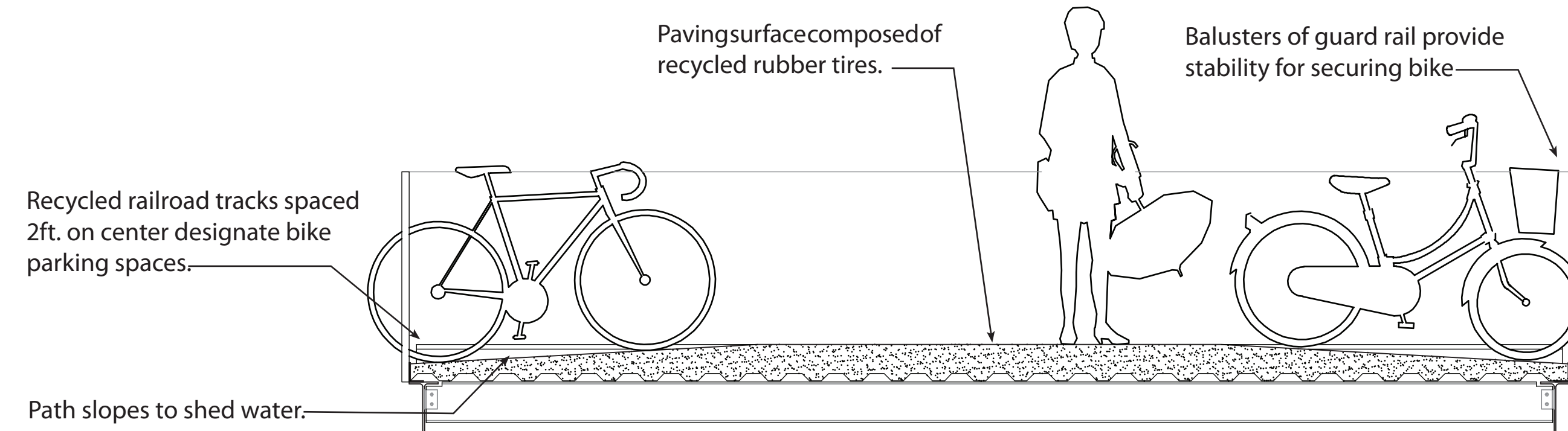
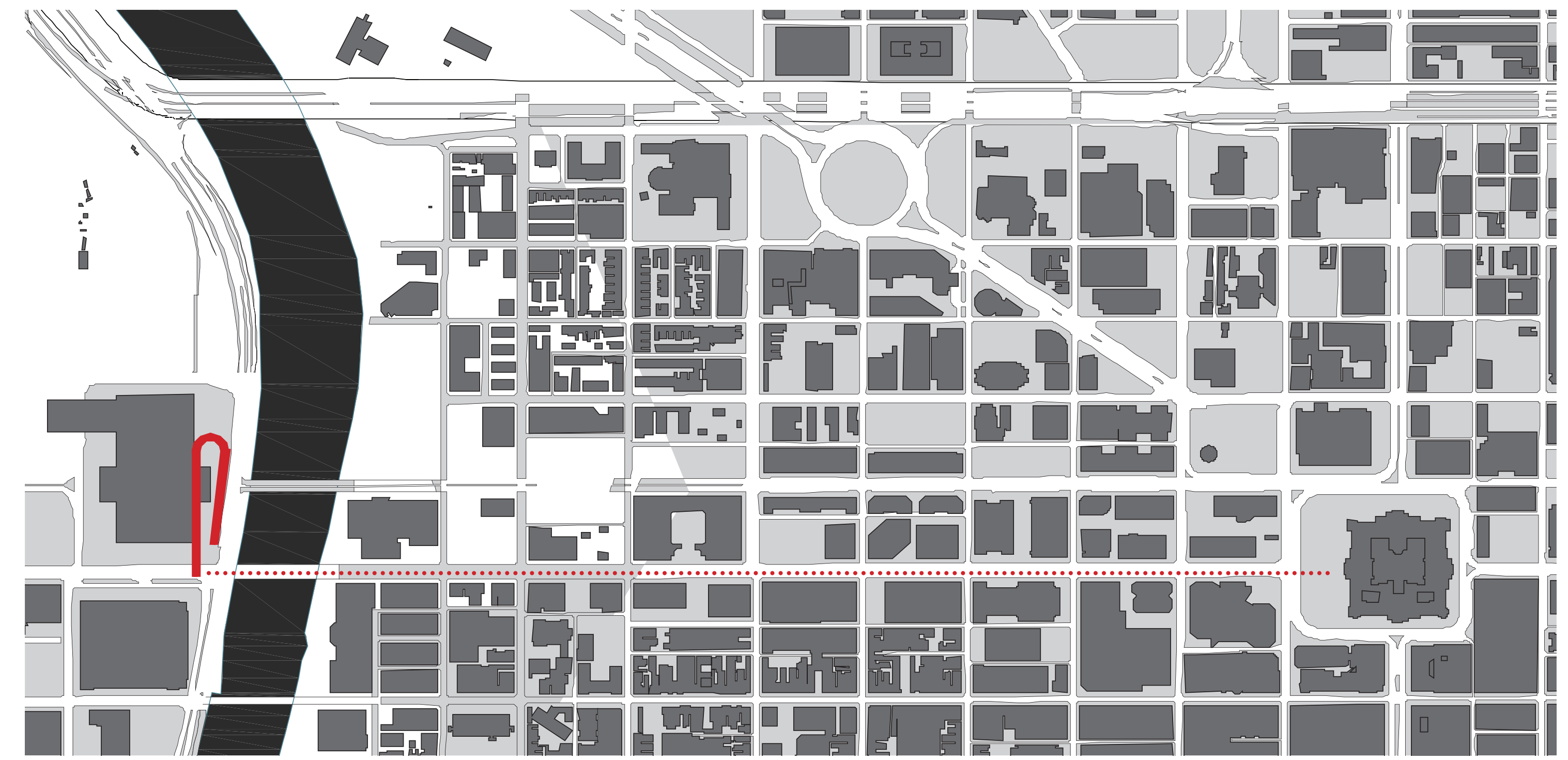


HUB

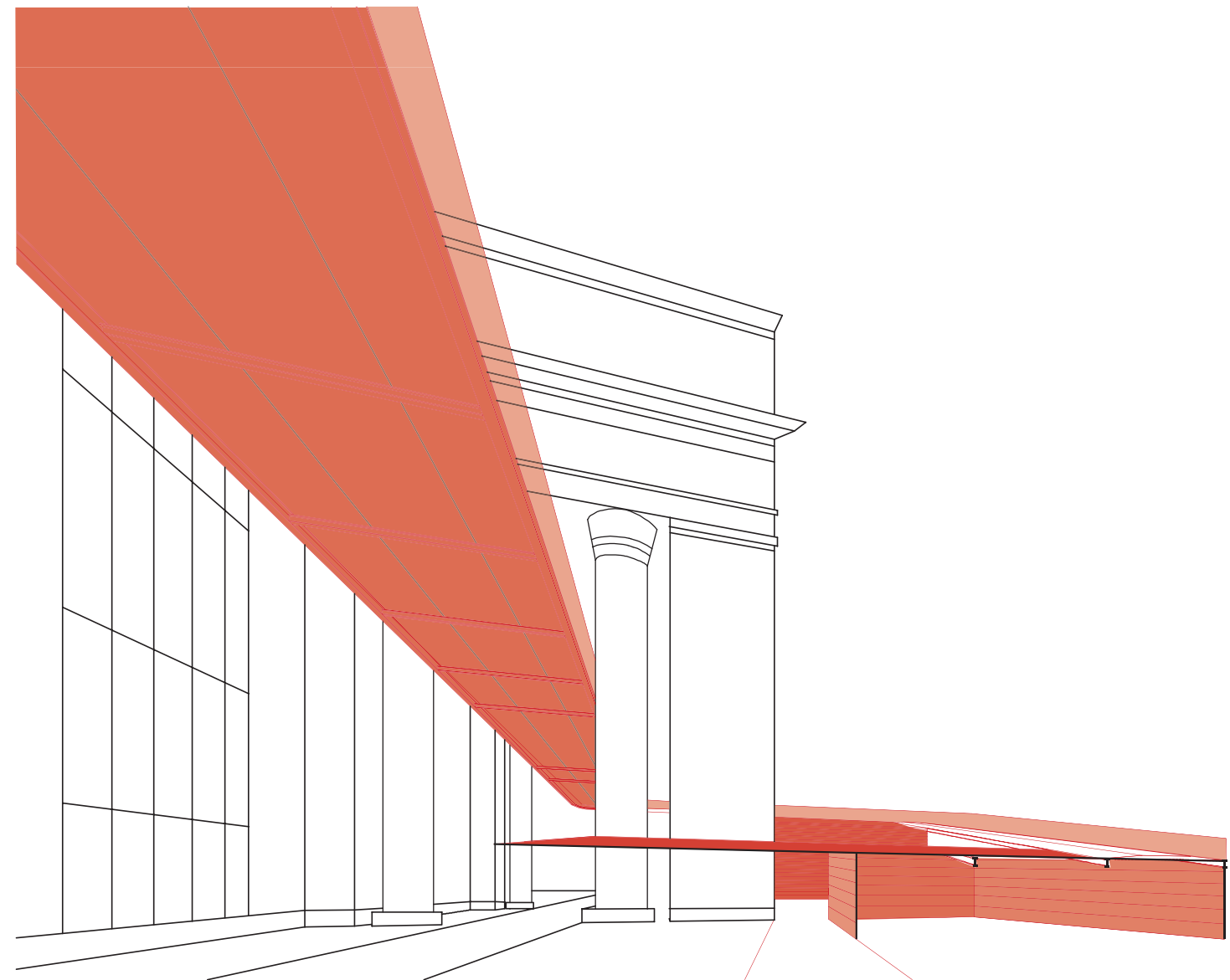
A HOME FOR URBAN BICYCLING

HUB is envisioned not only as a haven for urban bicycling, but as a catalyst for the growth of sustainable transportation networks throughout Philadelphia. This new institution will draw connections to existing bike paths and public transportation outlets while promoting ongoing efforts to improve infrastructure. HUB's location, design and implementation represent a modern view on how we can maneuver in cities in a healthy, safe, efficient and environmentally conscious way. HUB will provide long time advocates a forum for their efforts and generate increased participation within the community by extending their accessibility to the people of Philadelphia.

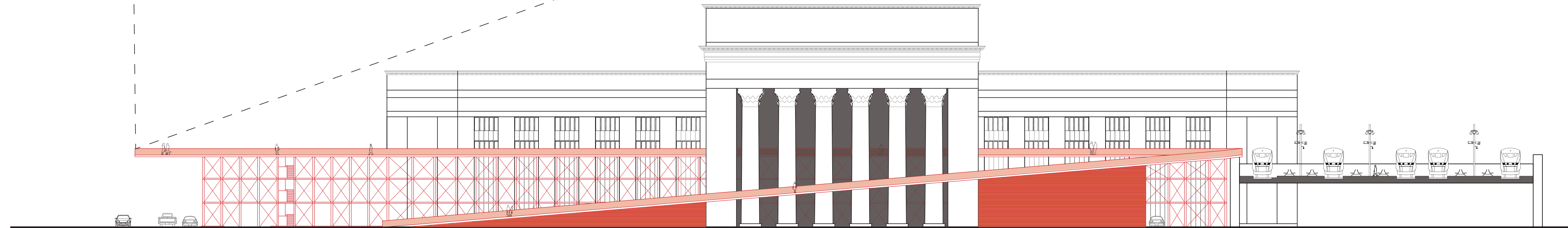
HUB utilizes recycled and re-purposed materials to execute a design methodology that considers the building's impact on issues related to energy, water, as well as the overall durability over its lifetime. Paving at the path is comprised of rubber from tires diverted from landfills. Recycled rails provide a structure for bicycle parking and a datum for the sloped paving at bike stalls while recalling the materials and geometries of railway travel. Plantings are integrated with paths as HUB's roof structures slopes up from grade; allowing for an extension of the streetscape to a dynamic greenspace. An elevated path creates new enclosed bicycle parking while celebrating the existing porte-cochere and engaging 30th Street Station.



Path slopes to shed water.



HUB Engaging 30th Street Station

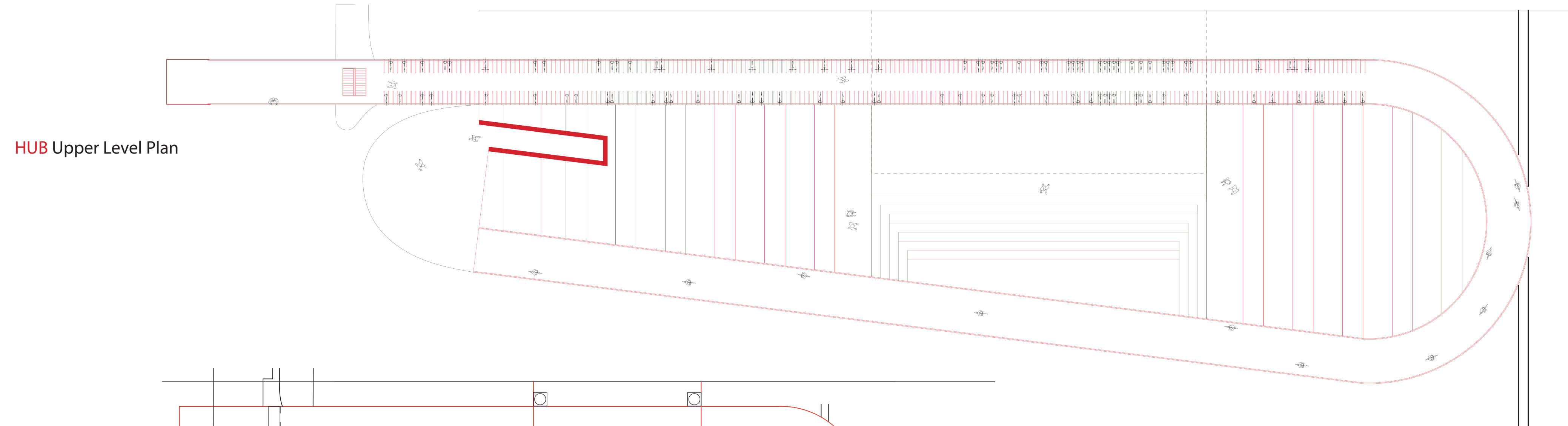


HUB East Elevation

Scale: 1/32" = 1'-0"

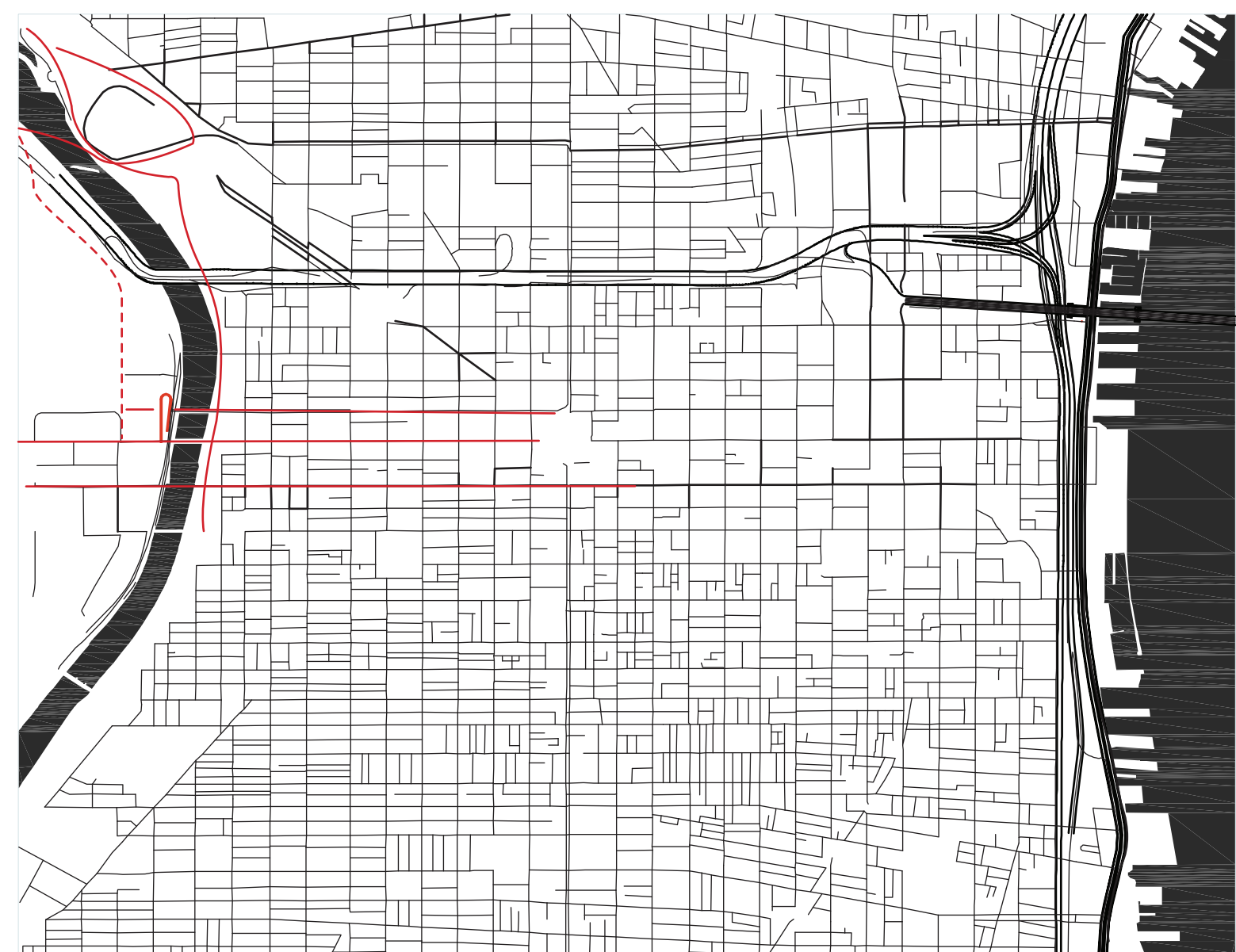


HUB & Built Environment

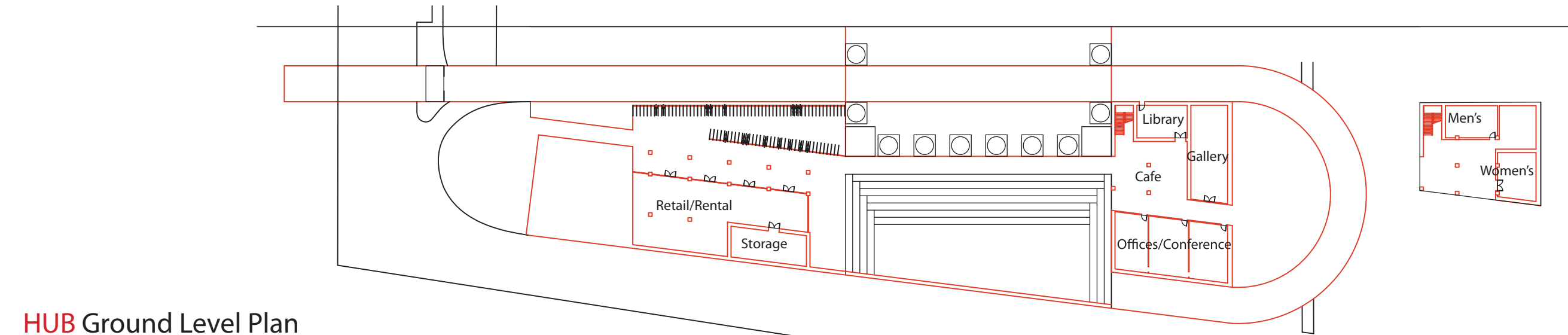


HUB Upper Level Plan

Scale: 1/32" = 1'-0"



HUB & City Paths



HUB Ground Level Plan

Scale: 1/64" = 1'-0"

